



GMT MONTHLY MEMBERSHIP PROGRESS REPORT

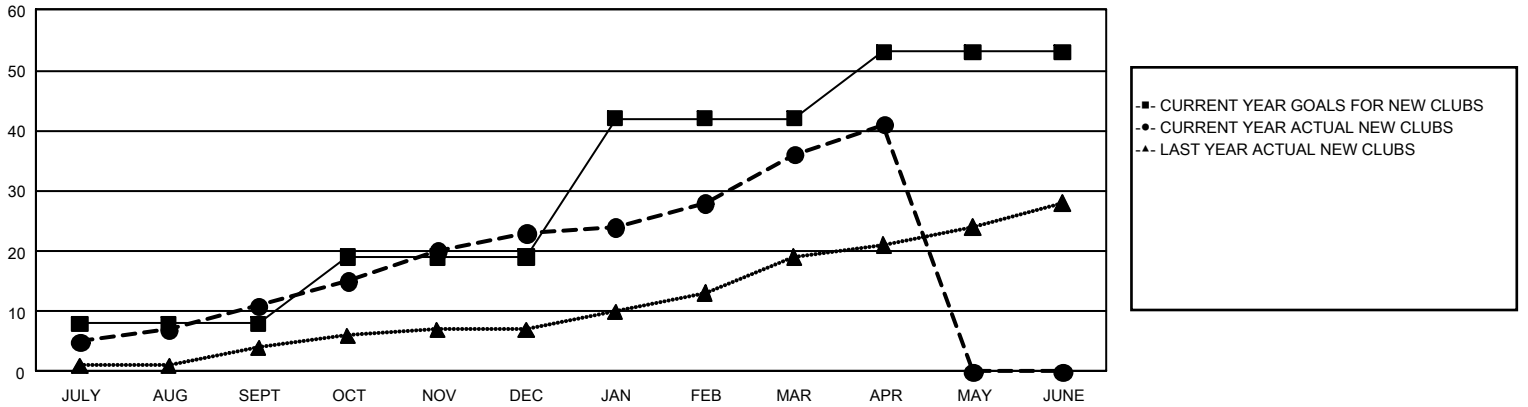
GAT Constitutional Area 5 - Japan

Results as of: 4/30/2026

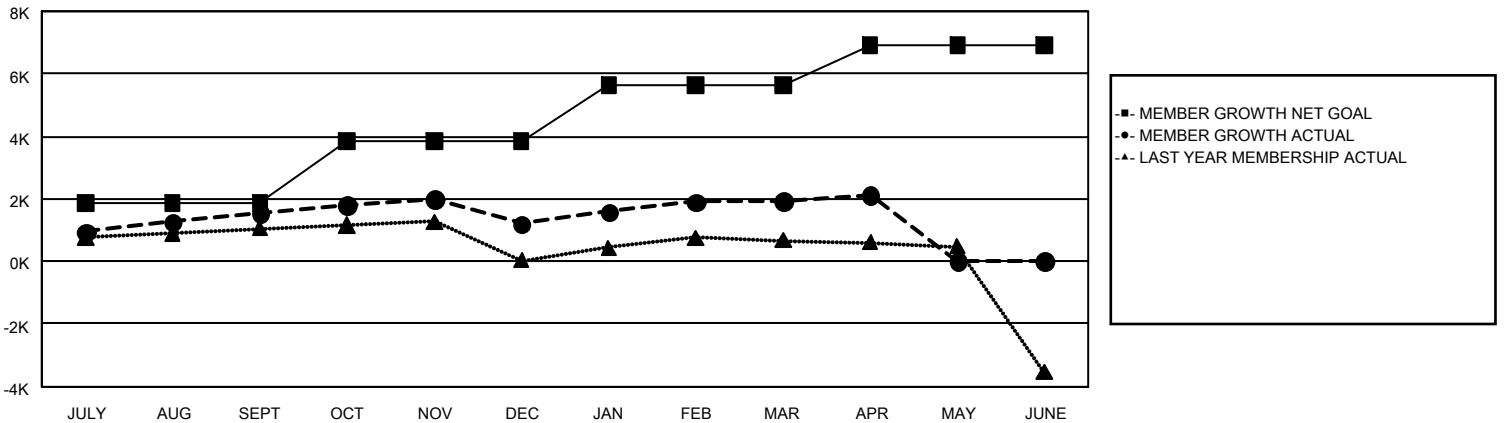
REPORT DOES NOT INCLUDE CLUBS IN UNDISTRICTED AREAS.

Clubs				Members			
RESULTS FOR 2025-2026				RESULTS FOR 2025-2026			
QUARTER	NEW CLUB GOAL	NEW CLUBS	DROPPED CLUBS	QUARTER	MEMBER GROWTH NET GOAL	MEMBER GROWTH ACTUAL	DROPPED MEMBERS ACTUAL (including transfers)
JULY/AUG/SEPT	8	11	4	JULY/AUG/SEPT	1,850	3,299	1,493
OCT/NOV/DEC	11	12	8	OCT/NOV/DEC	1,994	1,596	1,892
JAN/FEB/MAR	23	13	4	JAN/FEB/MAR	1,787	2,137	1,295
APR/MAY/JUNE	11	5	1	APR/MAY/JUNE	1,271	741	525

GOALS AND ACTUAL NEW CLUBS CUMULATIVE



GOALS AND ACTUAL MEMBERS CUMULATIVE



DROPPED CLUBS: 17	1,844 CLUBS OF 2,692 ADDED 1 OR MORE NEW MEMBERS	GENDER DISTRIBUTION MALE 71,018 (76.97%) FEMALE 21,221 (23.00%)
DROPPED MEMBERS	CLICK HERE FOR CUMULATIVE MEMBERSHIP DATA	TOTAL FAMILY UNIT MEMBERS 24,584
DECEASED 579		FAMILY MEMBERS PAYING HALF DUES 13,666
CLUB CANCELLED 71		
OTHER 4,548		
TOTAL 5,198		